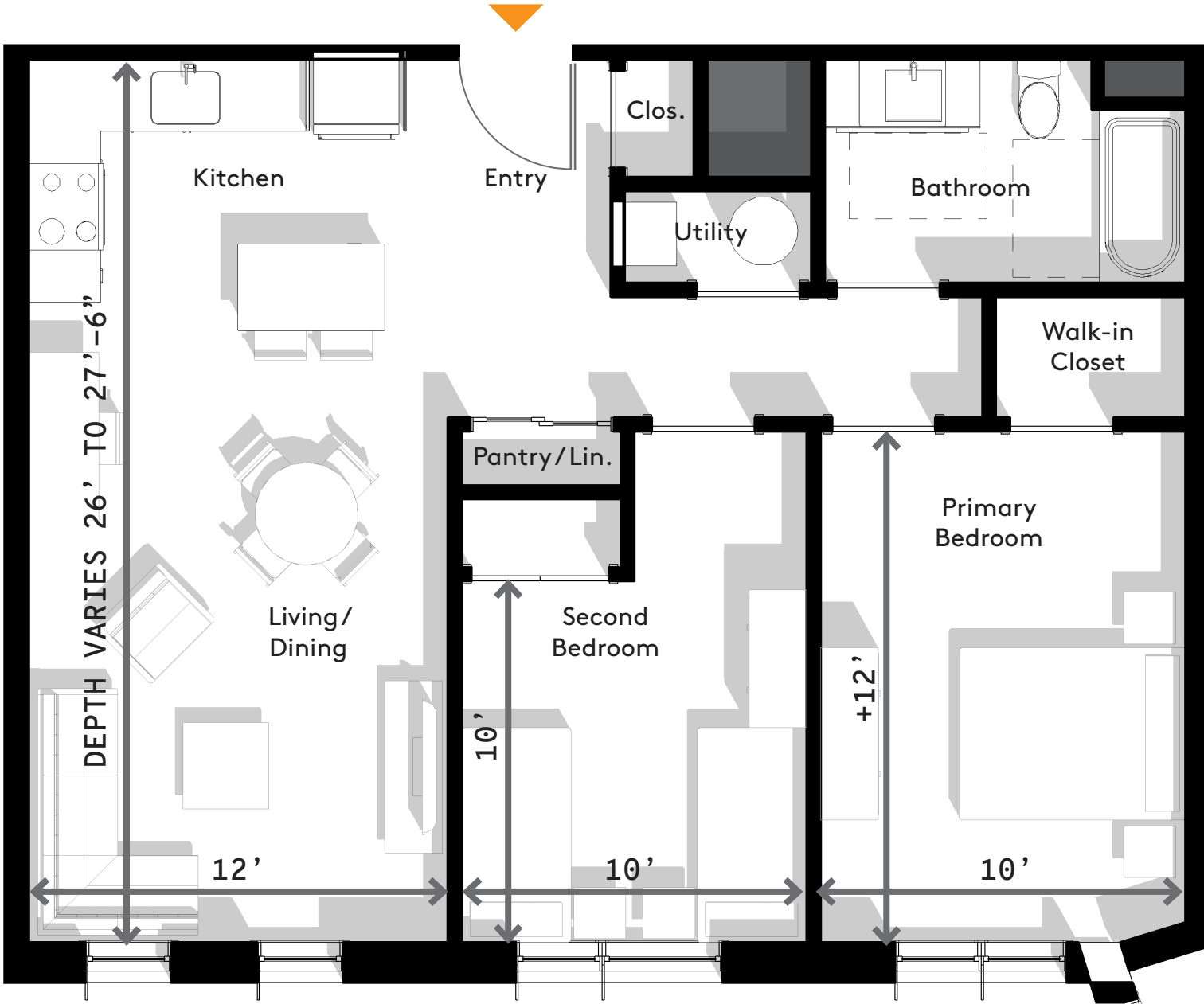


family-oriented unit sizes



living spaces allow for multiple configurations

work-from-home



enhanced thermal & acoustic comfort from Passive House construction

increased number of accessible units, with visitability accommodations throughout



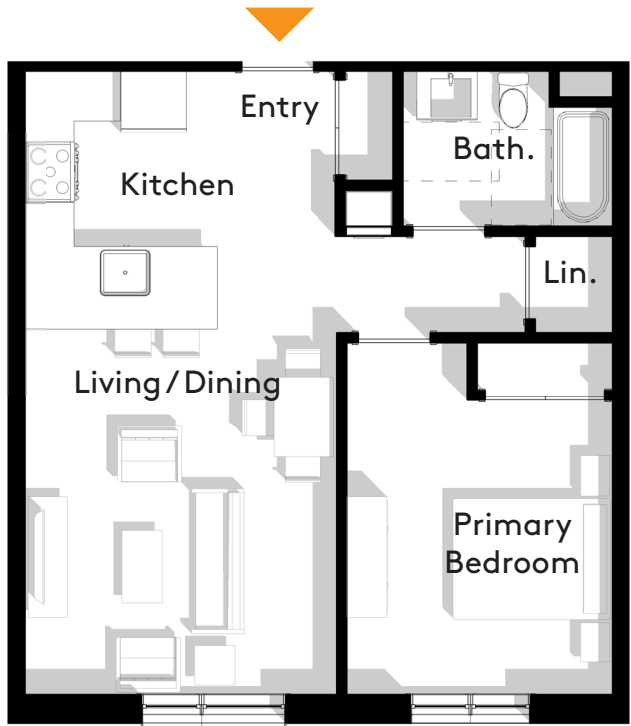
materials, textures, finishes, and fixtures selected for durability, economy, beauty, sustainability, and accessibility



high-performing exterior envelope and mechanical systems / ventilation

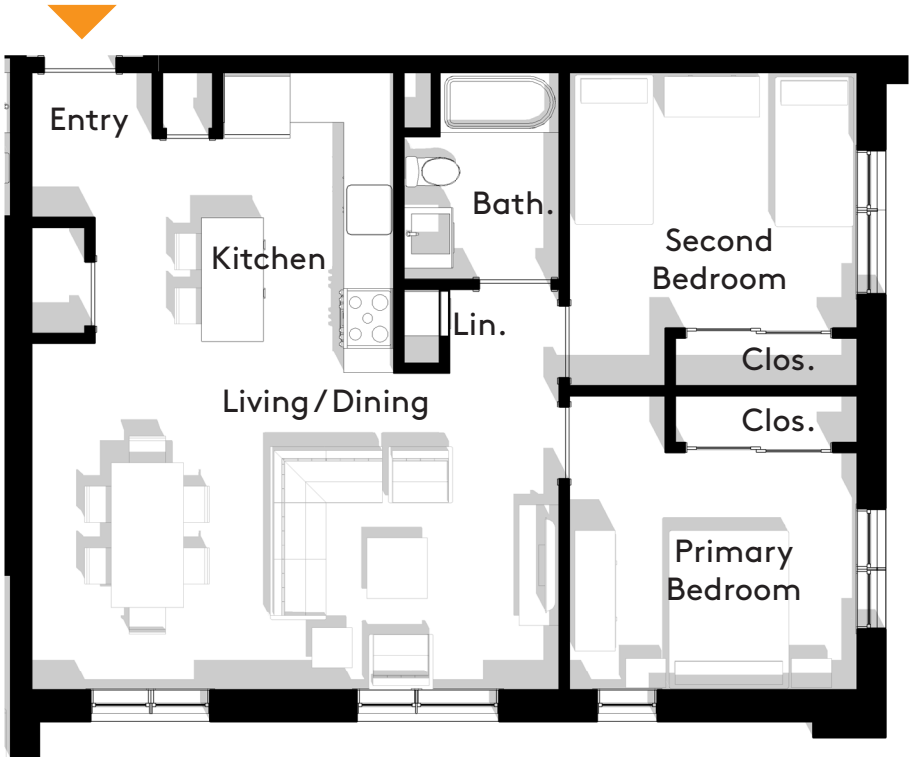
solar shading at windows guided by energy model calculations

SAMPLE 1-BEDROOM 637 NSF



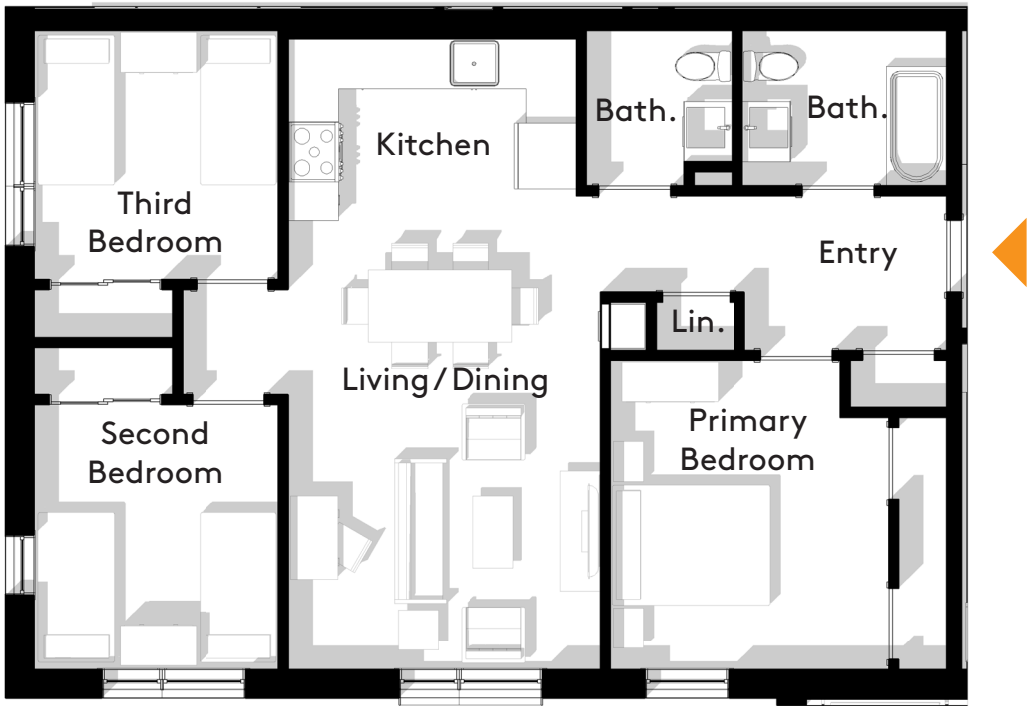
- / Full size appliances in kitchen, with peninsula seating
- / Living/Dining combination space
- / Bedroom fits queen size bed, 12' x 10' minimum dimension
- / Full bathroom with tub/shower combo
- / Entry and Linen/Pantry storage space

SAMPLE 2-BEDROOM 884 NSF



- / Full size appliances in kitchen, with peninsula or island seating
- / Living/Dining combination space 6- seat dining tables
- / Primary bedroom fits queen size bed, 12' x 10' minimum dimension
- / Secondary bedroom accommodates flexible arrangement, 10' x 10' minimum
- / Full bathroom with tub/shower combo
- / Entry, Pantry, Linen storage space

SAMPLE 3-BEDROOM 1,010 NSF



- / Full size appliances in kitchen, with island or eat-in seating
- / Living/Dining combination space 6- seat dining tables
- / Primary bedroom fits queen size bed, 12' x 10' minimum dimension
- / Secondary bedrooms accommodate flexible arrangement, 10' x 10' minimum
- / Full bathroom with tub/shower combo Second half-bathroom
- / Entry, Pantry, Linen storage space

